

# BMP MODEL THERMICROLL *Oval / Low Headroom*



- *Up to 60" per second opening speed*
- *Patented circular track groove*
- *Counterweighted – No springs*
- *Emergency open chain release*
- *Bearingless connection between panels and track*
- *Versatile and customizable*

#### AMBIENT AND COOLER DOOR SPECIFICATIONS:

Supply where indicated on plans Jamison BMP ThermicRoll spiraling door for all temperatures, from ambient to cooler.

Standard curtain is pre-painted aluminum in standard RAL colors. The spiral wrap is patented, in high density polyethylene PE HD 500.

Standard UL approved control panel to be a painted steel enclosure with window allowing vision of internal LED readout. Control panel uses

a proprietary circuit board with inverter with microprocessor.

The motor is an asynchronous inverter duty motor with brake. The incremental encoder mounted is attached to the end of the drum shaft.

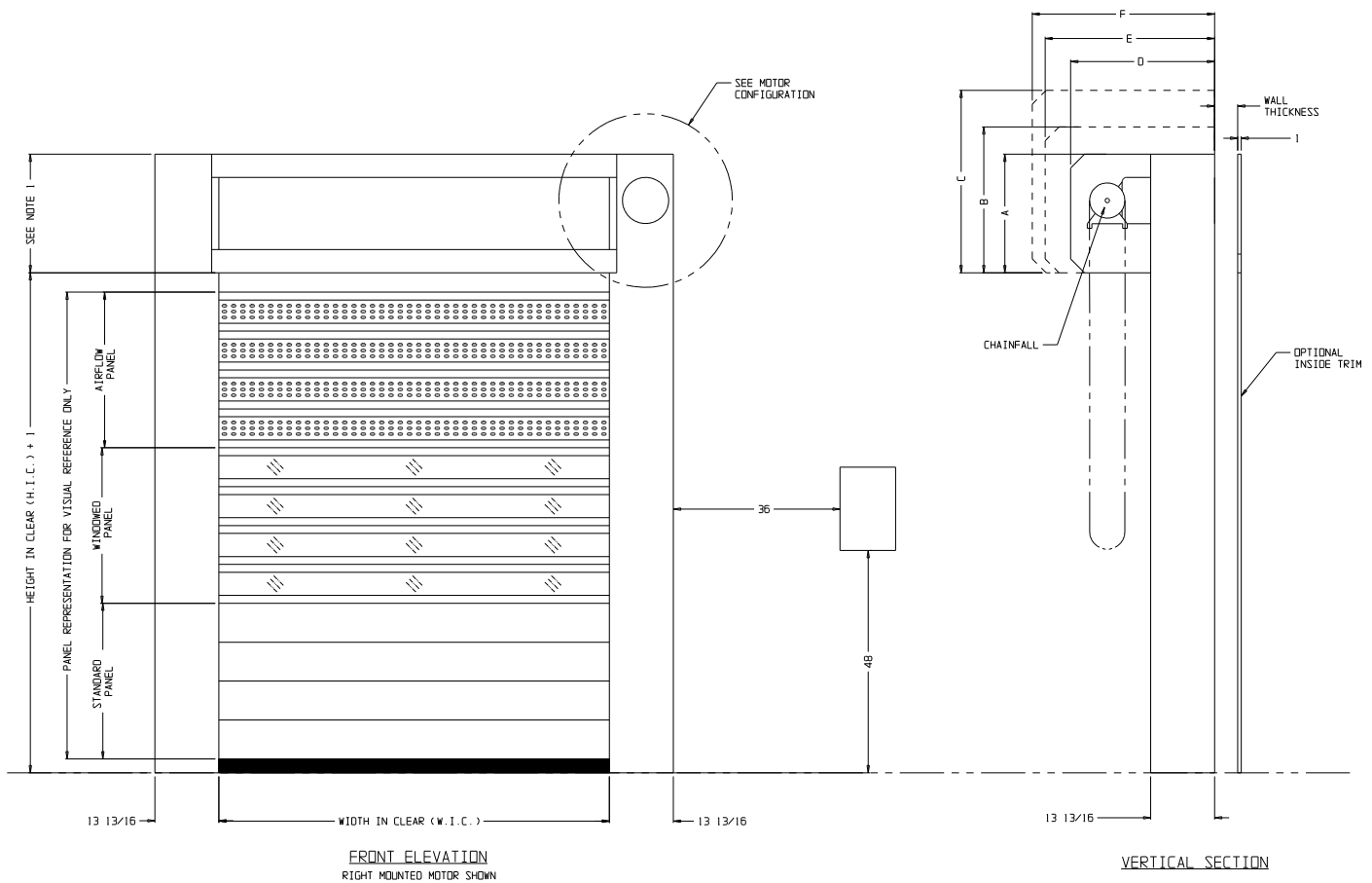
A light curtain is installed on the inside of the side guides and detects the presence of a pedestrian or vehicle, with 22 rays activated up to a height of 8 feet (depending on the size).

A manual crank release (counterweight) is standard for an emergency opening.

Power to be 208, 230, or 480 volt AC, 60 Hertz, 3 phase. Circuit breakers to be provided by other: Consult factory for amperage. Complete door assembly to be ready for connection with power. (Architect to designate responsibility for field wiring).

#### OPTIONS: (SPECIFY which options are desired)

1. Door panels can be supplied as either insulated, ventilated, or clear acrylic window panels.
2. Pull cords.
3. Push button.
4. Motion detector.
5. Floor loop.
6. Radio control.
7. Prox sensor in lieu of push button on control panel.



#### INSTALLATION POINTS:

1. Install roll up door, hardware, and electrical components in strict accordance with Architect's drawings and specifications and the door manufacturer's written instructions.
2. Complete installation, operating, and maintenance instructions shall be supplied for each door by manufacturer.
3. Manufacturer can furnish most types of installation hardware, such as: lag screws, machine bolts, carriage bolts or all thread. Trim, crush plates, and anchor bolts are also available.
4. Install side frames plumb and square, in correct locations indicated on drawings and with a maximum diagonal distortion of 1/4" over height of doorway. Ensure header is securely and rigidly anchored to adjacent construction.

# JAMISON

Jamison Door Company • P.O. Box 70 • Hagerstown, MD 21741-0070  
 Call Toll Free • 1-800-532-3667 or 301-733-3100  
 FAX: 240-329-5155  
 INTERNET: <http://www.jamisondoor.com>  
 E-MAIL: [contact@jamisondoor.com](mailto:contact@jamisondoor.com)